

A promotional poster for Jungle Island. The background is a dense, close-up photograph of large, dark green tropical leaves, possibly banana leaves, with prominent veins. The lighting is dramatic, with a strong purple and blue color cast over the entire image. In the center, the words "JUNGLE ISLAND" are written in a large, bold, sans-serif font. The letters are white with a vibrant orange-to-yellow gradient fill. Below the main title, the text "THE ICONIC EVENT DESTINATION" and "IN THE HEART OF MIAMI" is written in a smaller, white, all-caps sans-serif font, centered horizontally.

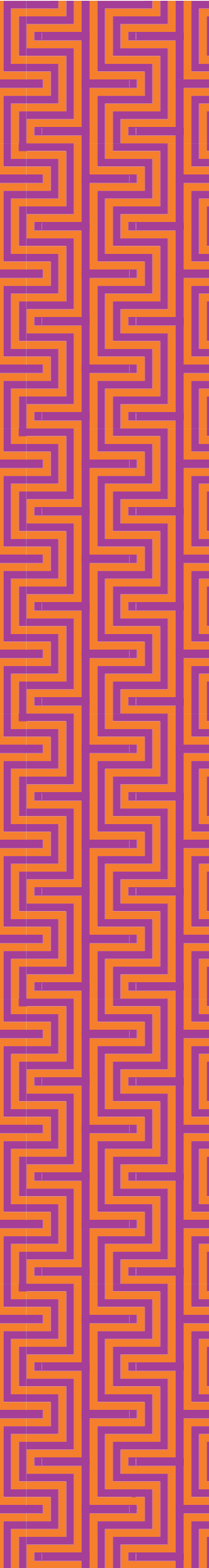
JUNGLE ISLAND

THE ICONIC EVENT DESTINATION
IN THE HEART OF MIAMI



TABLE OF CONTENTS

Letter from our CEO	3
Introduction	4
Event Spaces	6
Social Gatherings	7
Corporate Events	8
Capacity Charts	9
Contact	10





LETTER FROM OUR CEO JOHN DUNLAP

In the ever-changing events landscape, providing exceptional service in a contemporary space has always been at the heart of Jungle Island's philosophy. Now more than ever and as part of Jungle Island's complete overhaul of its event spaces, the core philosophy of providing authentic, innovative experiences and superior service remains constant.

After our closure due to Hurricane Irma, we have enhanced Jungle Island's lush, primal, interactive environment by pairing it off with highly experiential amenities. The opening of our improved event spaces and catering services will also provide immersive opportunities that exceed expectations and turn concepts into real-life experiences.

Currently, featuring nearly 58,000 (200,000) square feet of event space, Jungle Island provides the ideal venue with high-luxury touchpoints that raises the standard for all events in Miami. With the opening of the new Bloom Ballroom, reimagined by Edge of Architecture, the grand space provides a sensory and cinematic experience that complements any theme, or event type, whether a corporate function, a children's play party, a team building adventure, to a full on production.

We invite you to experience these carefully crafted services during your next event, and we look forward to having you become more than a client, but a close friend at our home.

Sincerely,

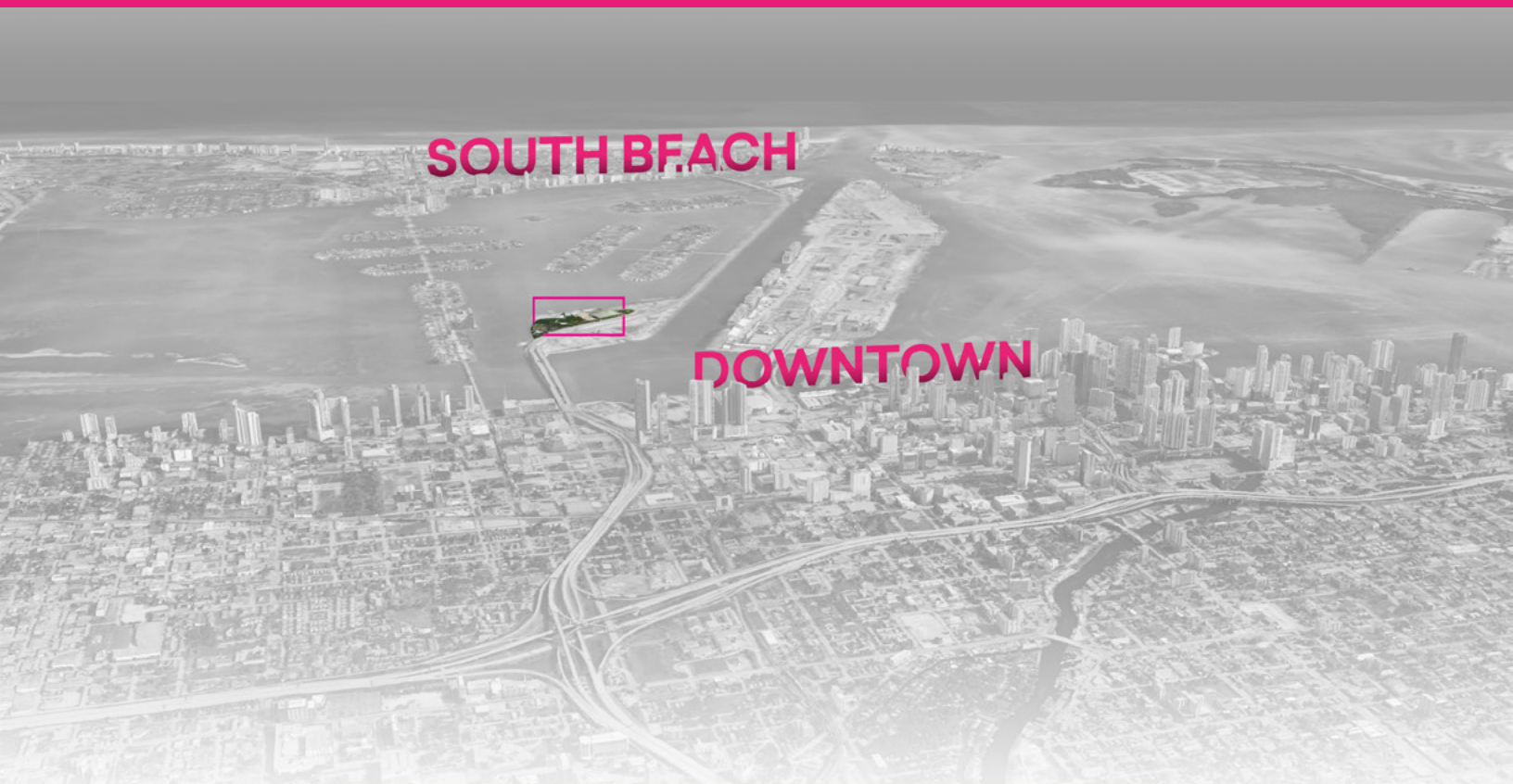


The newest premier event destination conveniently located in the heart of Miami.

Visit us at Watson Island on the MacArthur Causeway with over 200,000 sq feet of event space being released throughout 2018. Our freshly renovated ballroom and event spaces are sure to be a new spectacular setting for functions of any size, including parties, corporate meetings, galas and weddings. Our renowned culinary team is always ready to please the most discerning palates. Let us guide you with every single detail of your dream event.



**200,000 Square feet of indoor
& outdoor atmospheres designed
with breathtaking vistas.**



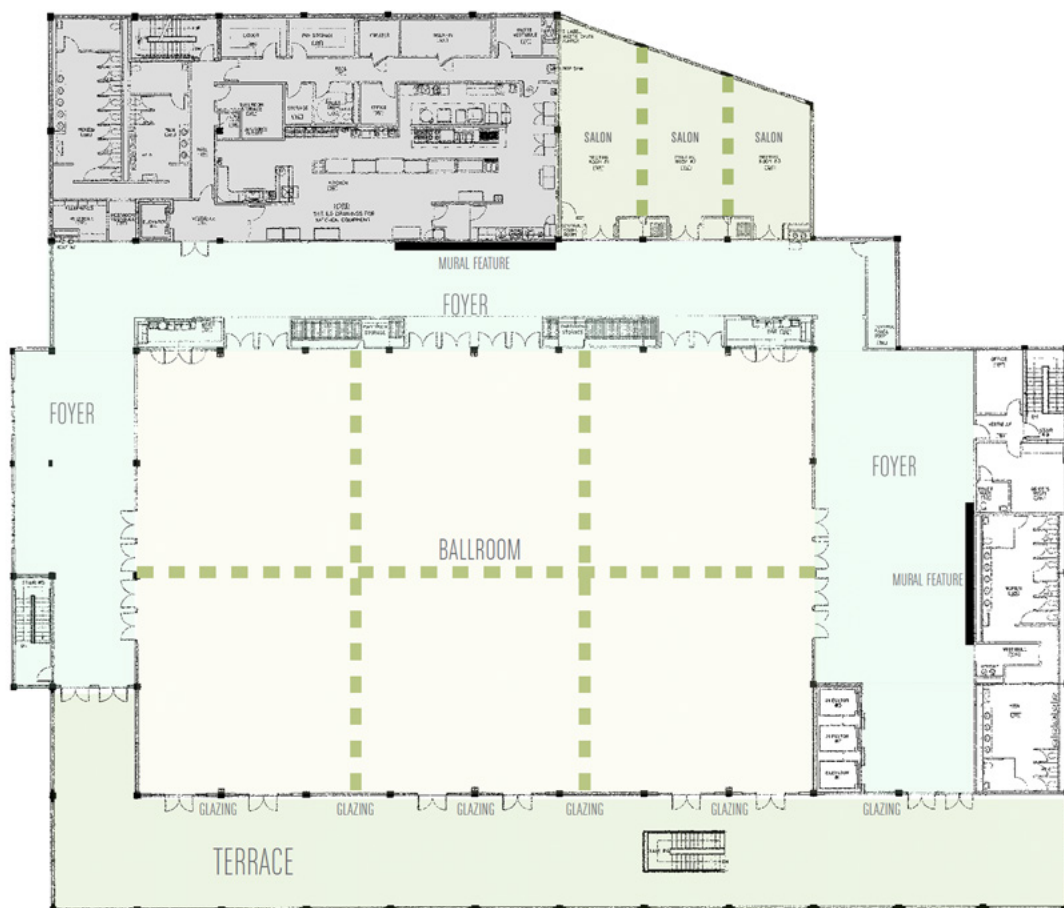


BLOOM

TIMELESS BALLROOM
& EVENT SPACES

JUNGLE ISLAND
THIRD LEVEL

BLOOM SPACES



AREA	MAX SEATING	SQUARE FEET
Ballroom	2,000	13,824
Salons	40 - 120	1,944
Foyers	500	1,928 - 3,036
Terrace	600	5,280

SOCIAL GATHERINGS

Our event specialists will create your personalized event solution, from extraordinary menus under the direction of Executive Chef Mark Borowski, to world class atmospheres and event experiences. From weddings and birthdays to bar mitzvahs, we will help you design your dream event.



CORPORATE EVENTS

Whether you are hosting a few guests or a few thousand, our goal is to ensure that each person feels part of an intimate ballroom affair. When planning your next team retreat, conference, holiday party or luncheon, let us create the perfect experience.



FULL CAPACITY CHART

THIRD FLOOR	Cocktail Seating	Banquet Seating	Theatre Seating	Classroom Seating	Conference Seating	U-Shape Seating	Width/Length	Square Feet	Ceiling Height
Bloom Ballroom + Terrace	2,000	1,000	1,500	600	n/a	n/a	144' x 96'	13,824	14
Bloom South	550	300	550	200	n/a	n/a	48' x 96'	4,608	14
Bloom Central	650	300	550	200	n/a	n/a	48' x 96'	4,608	14
Bloom North	650	300	550	200	n/a	n/a	48' x 96'	4,608	14
Bloom South Foyer	500	n/a	n/a	n/a	n/a	n/a	34' x 70'	3,036	12
Bloom North Foyer		n/a	n/a	n/a	n/a	n/a	97' x 16'	1,928	12
Bloom Terrace	600	250	n/a	n/a	n/a	n/a	220' x 24'	5,280	12
Bloom Bayview	150	120	150	120	40	60	54' x 36'	1,944	12
Bayview South								684	12
Bayview Central								666	12
Bayview North								684	12
Bloom Bayview Foyer		n/a	n/a	n/a	n/a	n/a	72' x 16'	1,152	12
Bloom Bridal Suite							18.5' x 14'	259	12

PARK ENTRY	Cocktail Seating	Banquet Seating	Theatre Seating	Classroom Seating	Conference Seating	U-Shape Seating	Width/Length	Square Feet	Ceiling Height
Main Plaza	1500	600	600	n/a	n/a	n/a		8,370	n/a

PARK NEAR WATER	Cocktail Seating	Banquet Seating	Theatre Seating	Classroom Seating	Conference Seating	U-Shape Seating	Width/Length	Square Feet	Ceiling Height
Beach Club	300 - 500			n/a	n/a	n/a	n/a	20,000	n/a
Waterfall Beach	80			n/a	n/a	n/a	n/a	1,000	n/a
Flamingo Lake	50 - 100	200 - 250	n/a	n/a	n/a	n/a	n/a		n/a

THROUGHOUT PARK	Cocktail Seating	Banquet Seating	Theatre Seating	Classroom Seating	Conference Seating	U-Shape Seating	Width/Length	Square Feet	Ceiling Height
The Banyon Tree	50	30	n/a	n/a	n/a	n/a	n/a	1,000	n/a
Garden Pavilion 1		75				n/a	36' x 24'	864	
Garden Pavilion 2		75				n/a	36' x 24'	864	
Garden Pavilion 3		75				n/a	36' x 24'	864	
Party Pavilion 1	40	25	n/a	n/a	n/a	n/a	16' x 24	384	
Party Pavilion 2	40	25	n/a	n/a	n/a	n/a	16' x 24	384	
Party Pavilion 3	40	25	n/a	n/a	n/a	n/a	16' x 24	384	
Party Pavilion 4	40	25	n/a	n/a	n/a	n/a	16' x 24	384	
Upper Level Parking Lot					n/a	n/a		37,500	n/a
Lower Level Parking Garage					n/a	n/a		37,500	

OPENING IN 2019 (THROUGHOUT PARK)	Cocktail Seating	Banquet Seating	Theatre Seating	Classroom Seating	Conference Seating	U-Shape Seating	Width/Length	Square Feet	Ceiling Height
Japanese Garden	100	200	n/a	n/a	n/a	n/a	n/a	1,850	
Event Lawn					n/a	n/a	n/a	12,500	n/a
Miami Experience (rooftop)					n/a	n/a	n/a	5,500	n.a
Jungle Theatre			500		n/a	n/a	n/a		
F + B Pavilion			1,000		n/a	n/a	n/a		
Carousel Bar/Destination Bar Area	60 - 80				n/a	n/a	n/a		



JUNGLE ISLAND | EVENTS

Address

1111 Parrot Jungle Trail
Miami, Florida 33132

Phone

305-400-7230

Website

jungleisland.com/events

Email

events@jungleisland.com